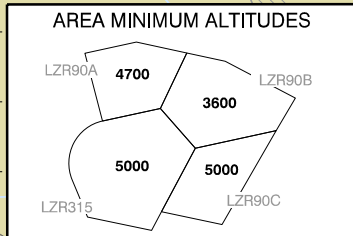
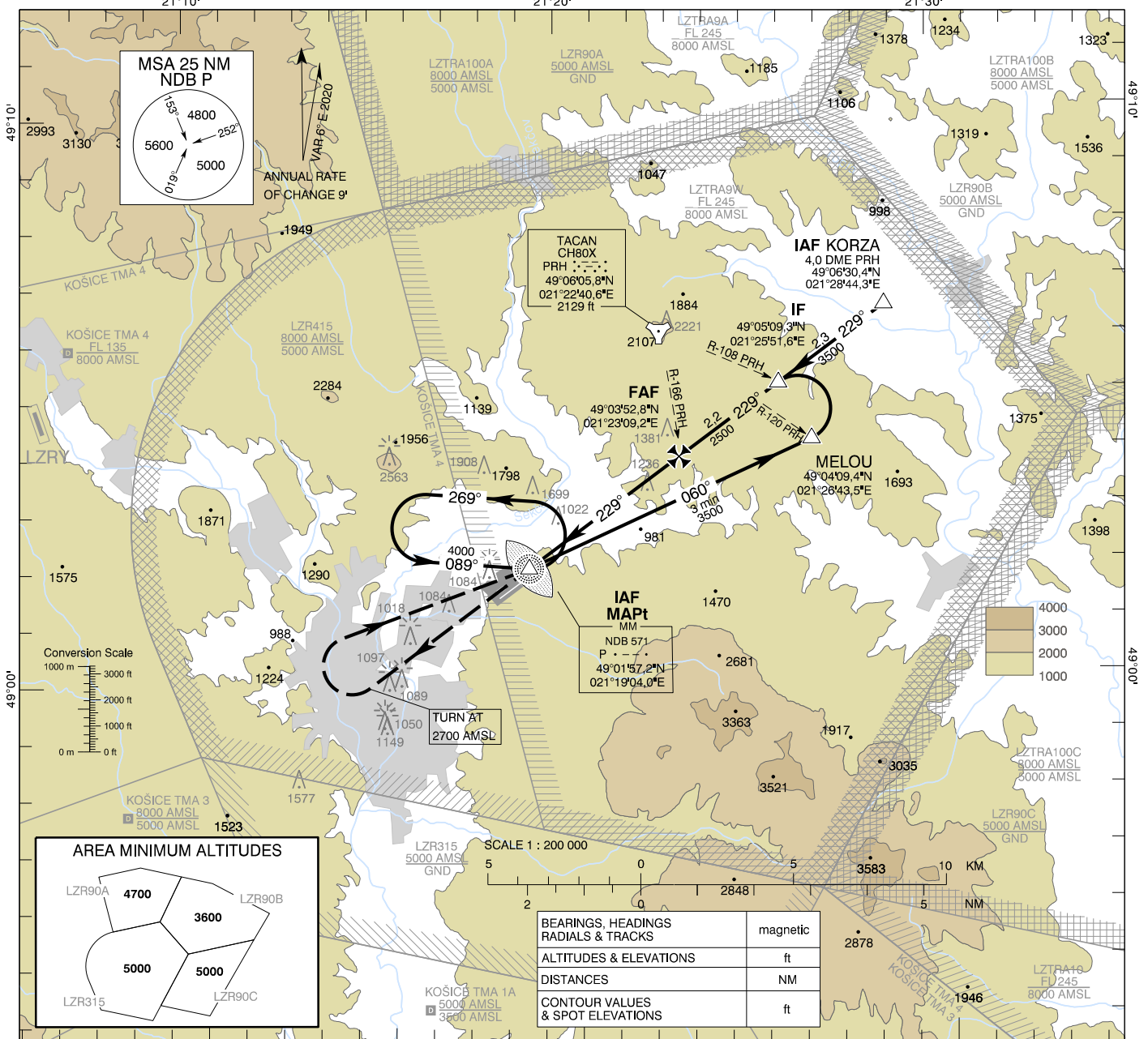


**INSTRUMENT
APPROACH
CHART - ICAO**

TRANSITION ALTITUDE
10 000 ft
AD ELEV 1035 - 37 hPa
THR RWY 23 ELEV 1035 - 37 hPa

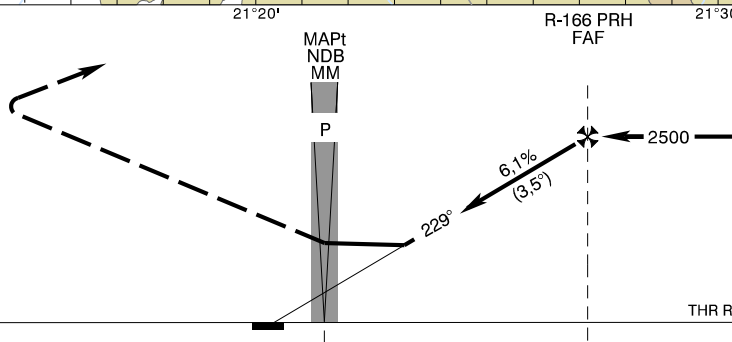
PREŠOV VEŽA 135,500
PREŠOV PRECISION 397,050
PREŠOV RADAR 134,325

**PREŠOV (LZPW)
NDB RWY 23
ACFT CAT H**



MISSED APPROACH

Climb STRAIGHT AHEAD, at 2700 AMSL
turn right to NDB P,
climbing to 4000 AMSL and hold.
No turn before NDB P.



THR RWY 23 ELEV 1035 - 37 hPa
NM to/from THR RWY 23

OCA (OCH)	H
Straight-in	ft 1860 (825)
Approach	

Ground speed	kt	70	90	100	110
FAF - MAPt (3.3 NM)	min:sec	2:50	2:12	1:59	1:48
Rate of descent (6,1%)	ft/min	434	557	619	681

Timing not authorized for defining the MAPt.

CHANGES: LZTRA09A, LZTRA09W renamed to LZTRA9A, LZTRA9W